

The logo for CHINTAN Sales features the word "CHINTAN" in a bold, white, sans-serif font. A white graphic element, resembling a stylized lightning bolt or a jagged line, cuts through the letters "I" and "N". Below "CHINTAN", the word "Sales" is written in a white, italicized, sans-serif font.

# CHINTAN *Sales*

Get every solution right here Delivering results, reliability, & rock solid dependability.



## Mission

Support our customers with the benefits of innovative, technically advanced, high quality products and associated services.



## Vision

To be the industry leader that is respected domain and admired by our customers and competitors for our people, performance and products.



## Objective

Supply our customers with superior solutions for the control and measurement of fluids through high quality products and services.



**Provide a safe, challenging and rewarding environment for all -employees where everyone is valued and respected as part of one family.**

# Quality Policy

Quality and Accuracy are the standards, not the exception



Our Quality Control Department is backed by a huge inventory of inspection equipment.



All the inspection reports are filled up offline for the manufacturing Parts.



Reports are verified by CMM reports and submitted to the customer upon demand.



Tools used for the inspection purpose are all Calibrated.

# Who are we?



Established in  
**1987**



Factory Area Covered  
**2475 Sq. Mt**



Total Staff  
**16+**



Annual Revenue  
**6Cr**



In-house Heavy Fabrication and machining facility



Manufacturing facility to design and produce bespoke solutions



We supply high quality industrial products

Established In **1987** By



**Founder**



Catering to  
Engineering  
Fields



Power Generation



Oil & Gas



Rail MRO



Automotive



Pharma

# Why us?



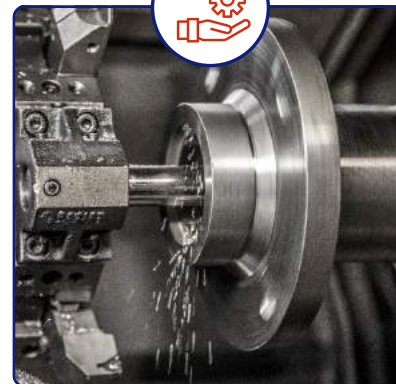
**Good amount of  
Industry Exposure**

**Multiple solutions,  
Several applications,  
One provider**

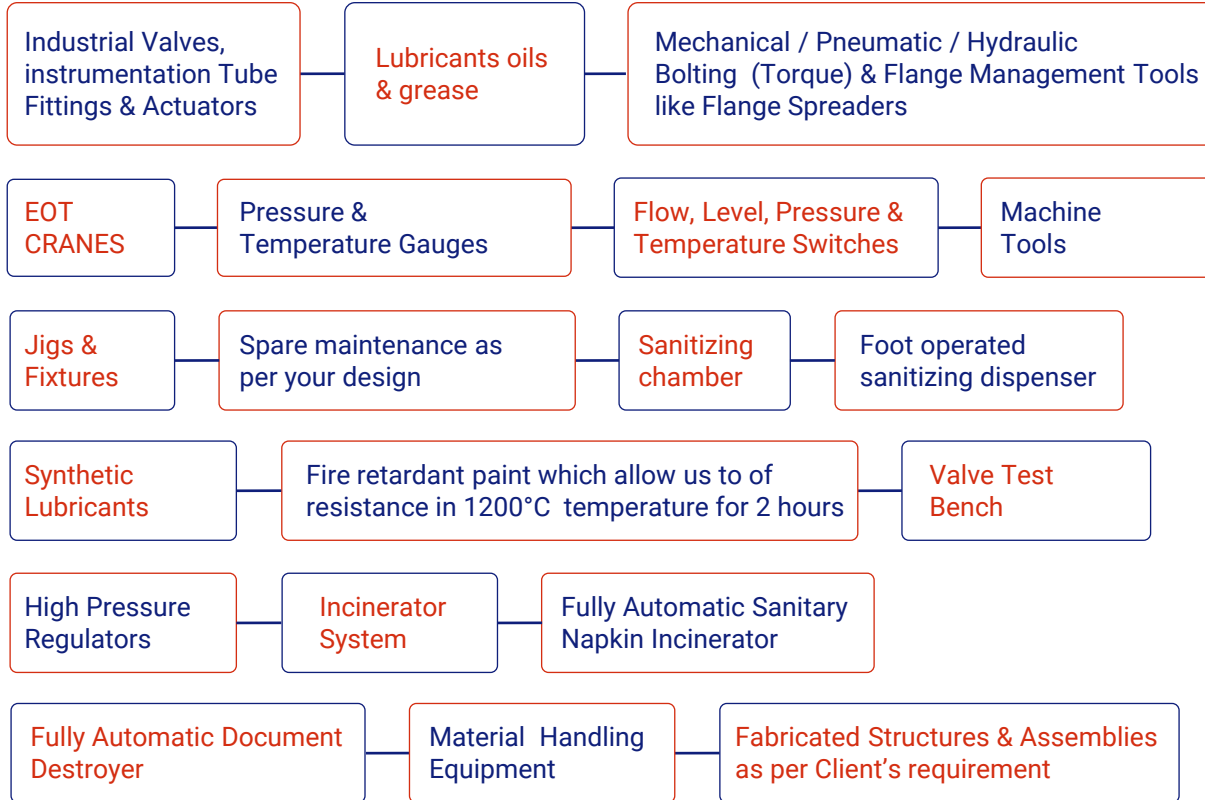


**Experienced staff  
Delivering Exceptional  
output**

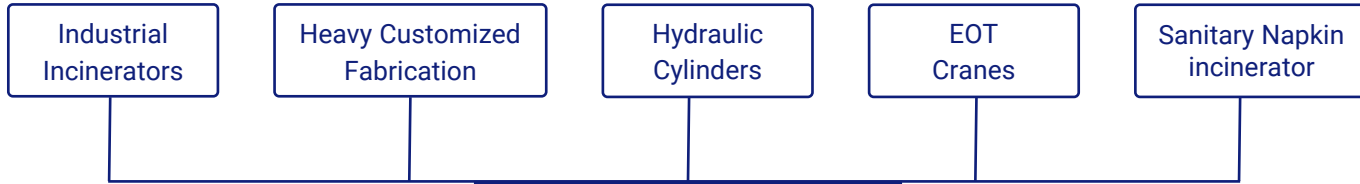
**Standard quality Spare  
parts used in all our  
Equipment**



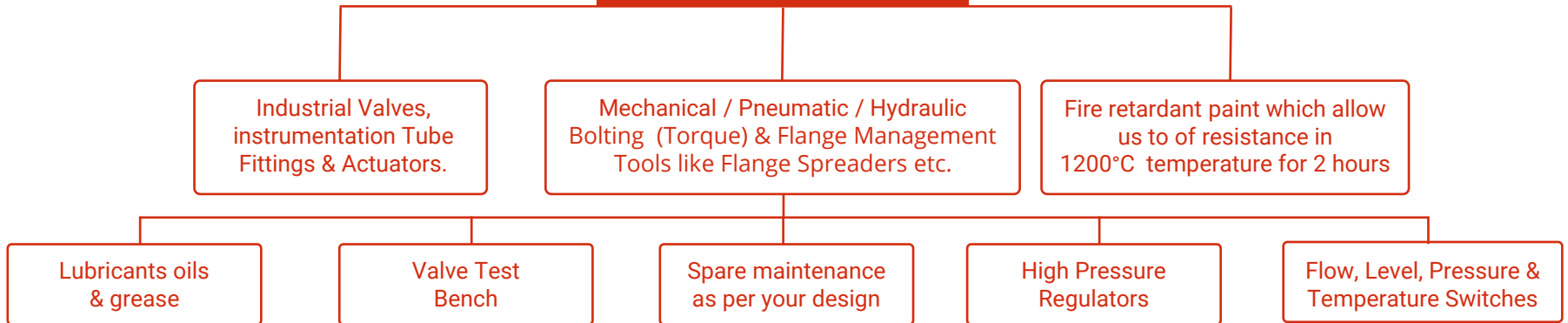
# What we can Deliver



# Our Product *(Manufacturing & Trading)*



## TRADING



# Sanitary Napkin Incinerator / Destroyer



**Storage Capacity** - 01 - 02 Nos.

**Burning Capacity** - Up To 15 - 20  
Napkins / Day.

**Dimension** - Approx. 6" X 6.1/2"x15"

**Weight** - Approx. 06 - 08 Kgs. With  
Accessories & Packing



**Storage Capacity** - 05 - 07 Nos.

**Burning Capacity** - Up To 100 - 150  
Napkins / Day.

**Dimension** - Approx. 10" X 8.1/2"x18"

**Weight** - Approx. 13 - 16 Kgs. With  
Accessories & Packing



**Storage Capacity** - 10 - 15 Nos.

**Burning Capacity** - Up To 200 - 300  
Napkins / Day.

**Dimension** - Approx. 12"x12"x19"

**Weight** - Approx. 24 - 27 Kgs. With  
Accessories & Packing



# Incinerator Systems



## LIQUID WASTE INCINERATOR

- FULE : LDO/HSD/FO/GAS FIRED
- INCINERATION CAP : 50 LTRS TO 5000 LTRS/HR.



## BIO- MEDICAL WASTE INCINERATOR

- FULE : LDO/HSD/FO/GAS/ELECTRIC FIRED
- INCINERATION CAP : 5 KGS, TO 3000 KGS./HR.



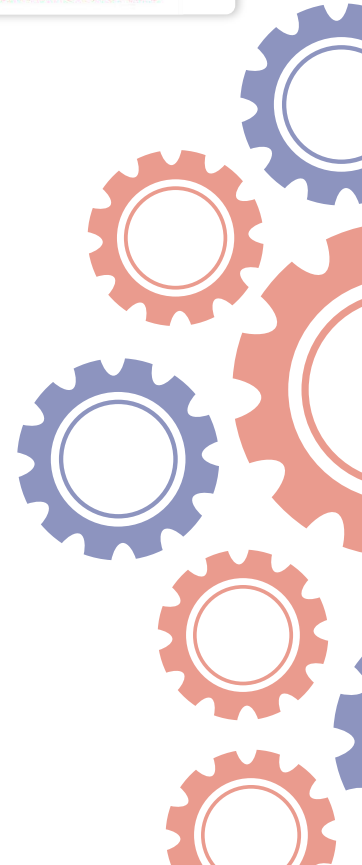
## SOLID WASTE INCINERATOR

- FULE : LDO/HSD/FO/GAS/ELECTRIC FIRED
- INCINERATION CAP : 5 KGS, TO 5000 KGS./HR.



## COMBINE WASTE INCINERATOR

- FULE : LDO/HSD/FO/GAS FIRED
- INCINERATION CAP : 5 KGS, TO 5000 KGS./HR.
- INCINERATION CAP : 5 LTRS. TO 2000 LTRS/HR.



# Principals



**rotork**<sup>®</sup>

*Valve Actuator*



*Valve For Nuclear  
Application*



*Valve & Actuators*



**FLUKE**<sup>®</sup>

*Calibration*



**Barksdale**<sup>®</sup>  
CONTROL PRODUCTS

*Control Product*



**INNOVAC**  
xprience the Innovation

*Solenoid Valves*



**ZYLOK**<sup>®</sup>

*Instrumentation & Tools*



*Atlas Copco*

*Bolting Solution*



**GROZ**

*Automotive Tools*



**Cygn**  **Fire**

*Fire Retardant Paint*



**GRESOL**<sup>™</sup>  
LUBRICANTS

*Lubricants*



**holmatro**  
mastering power

*Mastering Power*



**SANKEY**

*Valve.Actuation.LSB*



*Jai Bhagwati Enterprise*

# Rotork

The Rotork logo consists of the word "rotork" in a bold, red, lowercase sans-serif font. A registered trademark symbol (®) is located at the top right of the letter "k". The logo is centered within a white rounded rectangular box.

*Rotork manufactures a full range of Flow Control products including Actuators, Gearboxes, Instrumentation and Control, and Valve Accessories:*



**Electric  
Actuators**



**Gearboxes and  
Valve Accessories**



**Instrumentation and  
Control**



**Fluid Power  
Actuators**



**Process Control  
Actuators**

# Flocon



## *Flocon Systems Private Limited*

Incorporated in 1988, Flocon Systems marked the inception of an ongoing commitment to design and manufacture of valves for the client's intended purpose and exact specifications.

It is one of the most trustworthy single point source of varied designs and dimensions of Industrial Valves, Actuators and Instrumentation Equipment. Flocon Systems caters to the versatile requirements of voluminous industries like Cement, Process and Chemical, Refineries & Petrochemicals, Fertilizers, Pharmaceuticals, Thermal Power Stations, Electronic, Paints & Varnishes, Sugar, Steel Plants, Food and Oil industry and many others.



# Barksdale

**Barksdale**  
CONTROL PRODUCTS

Throughout the world, Barksdale solutions can be found in steel mills, on machine tools, in auto plants, in power generation and distribution facilities, in chemical processing plants, in pulp and paper mills, textile mills, amusement parks, and food processing plants, on offshore drilling rigs, in oil and natural gas fields, rescue equipment, and on many forms of transportation equipment, both on- and off-road. Many industries use a variety of Barksdale's product lines.



PRESSURE SWITCH



LEVEL SWITCH



TEMPERATURE SWITCH



FLOW SWITCH



**Established in the year 2008**

"Zylok Valves & Engineering" is engaged in manufacturing, marketing and delivering a wide range of industrial tools.

Our products are known for their superior quality, durability, robustness and flawless finish, which make them perfect to be used in a number of industrial applications in various sectors such as automobile industry, thermal power plants, petrochemicals, oil industry, cement plants and construction, to name a few.



**PRESSURE REGULATING VALVE**



**NEEDLE VALVE**



**INSTRUMENTATION TUBE FITTINGS**



All of our bolting solutions are crafted, designed and manufactured in house to ensure each tool has quality built-in. Our world-class production facility in Europe always develop high-quality products and with teams so close together it continues to breed innovation

## **BOLTING**

Hydraulic  
tensioners



## **BOLTING**

Hydraulic  
torque wrenches



## **BOLTING**

Nutrunners



## **AFTERMARKET**

Service  
Calibration  
Rental



## **ACCESSORIES**

Airline Pumps  
Sockets



## **ASSEMBLY**

Nunrunners  
Impact wrenches



## **MATERIALREMOVAL**

Grinders Cut  
off's Sanders



## **MATERIAL REMOVAL**

Chipping Scaling  
Beveling



# JBE



## Hydraulic jacks

Hydraulic jacks & cylinders for all type from lifting cylinders till pile testing jacks up to 3000 ton capacity with hydraulic powerpack. All flange management tools, Hydraulic press, jacks, hydraulic and pneumatic pumps, hydraulic powerpack system, hydraulic puller, nuts splitter, mobile floor crane, jin cranes



## Laser Alignment Services

A propeller shaft drive line may consist of different part depending on ship design, drive shaft, bearing support, stern tube, gearbox, motor, and couplings. you usually want to align the components in a straight line.



# HOLMATRO



A hydraulic cylinder (also known as a jack, bottle jack, press, small press, small bottle, pump or small pump) is a drive element that is used in equipment or tools to exert linear strength using a hydraulic liquid (oil).



Holmatro's Skidding Systems are suitable for moving industrial objects and installations with exceptional sizes and weights to locations where using a crane is not an option



Offshore Wind Hydraulic Solutions offer a solution regarding sea fastening and levelling the foundations of wind turbines. Click on the image below for more (technical) information.



**SYNCHRONIZED LIFTING**  
Computer-controlled synchronized positioning of heavy loads with high damage risk has never been so easy!



The Holmatro Vertical Lifting Wedge has a special construction enabling a strayed and unique vertical lifting movement to prevent tilting of the load.



Holmatro industrial cutters are user-friendly, reduce physical demands and are safe to operate. Our experience and technical expertise enable us to offer you adequate solutions for almost any cutting application you can think of.

# Cygnofire



*Cygn Fire is a water base intumescent fire retardant paint that can be applied on wide range of substrates by using brush, roller, spray. The required coating thickness depends on the desired fire rating (ex - 120mins Fire rating)*

## UNIQUE FEATURES



Non toxic



Showers the spread of fire



Minimize dangerous smoke & Fumes

## APPLICATION AREAS



Industrial Structures



Shopping Centers



Highrise Building



Airport, Railway Stations



Hospitals & Schools



Railway & Ship interiors



Electrical Installations

# Gresol



**GRESOL**<sup>™</sup>  
LUBRICANTS

**Gresol Lubricants** is India largest exporter of greases and lubes offering innovative products in the field of **Automotive & Industrial Lubricants & Greases**. Having branch offices in **UAE**. Based on a profound understanding of diverse industrial requirements, the company has empowered its clients with customized products based on their specific requirements. Our exceptional product quality is equally matched with our excellence in problem solving capabilities and technical customer service.

Owing to well-equipped laboratories and the most advanced control instruments, Baroda Greases & Autocar Products Pvt. Ltd produces greases & lube of highest standard of quality and consistency. A dedicated R&D center is the focal point of innovations that leads to formation of advanced quality products.



# Fluke



## 5522A Multi-Product Calibrator Robust, transportable wide workload coverage

The 5522A Multi-Product Calibrator is the most accurate model in this calibrator family. It calibrates digital multimeters into the 5.5 and 6.5 digit category.

The 5522A addresses the widest calibration workload with optional power quality capabilities and oscilloscope Calibration for scopes with bandwidths to 1100 MHz. It comes with internal and external protection features that protect it against damage and make it easier to transport for onsite or mobile calibration. The 5522A can be fully automated with MET/CAL Plus Calibration Management Software. It is the ideal calibrator for metrology professionals who need to Calibrate many different types of electronic equipment and want a transportable instrument that offers them a high return on investment.

## 5080A High Compliance Multi-Product Calibrator Calibration solutions for your analog and digital workload

The 5080A Multi-Product Calibrator calibrates your analog and digital workload accurately and economically. Its high voltage and current compliance makes analog workload calibration easy and precise. With maximum burden up to 800 mA for ac/dc voltage, an voltage up to 50 V for ac/dc current, 5080A calibrators can drive a wide range of analog meters. Built-in protection circuitry protects the 5080A against damaging input voltages. Versatile software applications enable you to record paperless results and more. Options and accessories enable you to use the 5080A to calibrate an even broader workload, including clamp meters, oscilloscopes, and megohm meters.

### Innovation from the leader in calibration

Fluke Calibration pioneered the multiproduct calibrator concept, creating a family of instruments that allow you to calibrate the widest range of today's electronic test tools with a single instrument. These calibrators offer simple, portable, cost-effective solutions that allow you to match your calibrators to your workload and your budget.



## 5502A Multi-Product Calibrator

Robust, transportable solution to match your workload and budget

# Sankey

**SANKEY**

*The sankey series 15, 30 & 60 can handle a vast variety of fluids, semisolid and almost any corrosive service on chemical, oil, petrochemical, gas, pulp, paper processing and other industries, Our standard valves with CFT seats are suitable for steam*



## GENERAL FEATURES

- 2 Piece bolted body design for ease of field service and maintenance
- Fire safe certified
- Extremely low torque for actuation saving
- ISO mounting pads, Direct mounting for actuators
- Locking device
- Independent Dual body seals
- Standard valves meet NACE
- Body coated for corroding protection
- Inert seals suitable for most service applications

## Our Client



**Emcure**  
SUCCESS THROUGH INNOVATION



**NIVEA**

**adani**<sup>TM</sup>

**PowerDrive**

**INBISCO  
INDIA**

**Kirloskar**

**MAHABAL**  
Group of Industries

**MCI** MITSUBI KINZOKU  
COMPONENTS  
INDIA PVT LTD

**एनटीपीसी  
NTPC**

**RAICAM**

**unicharm**

**SHARDA MOTOR**

**TENNECO**

**KERALA SIDCO LTD**

**UFLEX**  
'A part of your daily life'

**POSCO**

**VOLTAS  
beko**

## Other Services

- *We undertake all types of on-site bolting services and shut-downs. It includes bolt torquing, Bolt Tensioning*
- *we ensure controlled bolting service are carried out with due safety and precision*
- *We also undertake Annual Rate Contracts for Bolting.*
- *Controlled bolting services for installation, commissioning of major equipment such as turbines, compressors, heat exchangers, tower cranes, wind mill, fender bolting, structural bolting.*



- Electric Nut Runner
- Pneumatic Impact Wrench
- Direct fit link type Torque Wrench
- Front Reaction Type Torque Wrench
- Sale and Rental Products
- Hydraulic Cylinders Pumps
- Hydraulic Bolt Tensioner
- Dedicated Bolt Tensioner
- Hydraulic Torque Wrench
- Pneumatic Torque Wrench
- Square Drive Torque wrench
- Standard bolt Tensioner
- Electric torque Wrench

# Thank You

## Get In Touch With Us



+ 91 - 9824038086



[www.chintansales.com](http://www.chintansales.com)



E-42 Bol GIDC, Sanand - II, Behind Endurance Technologies Ltd.,  
Taluka: Sanand, Dist: Ahmedabad - 382170